

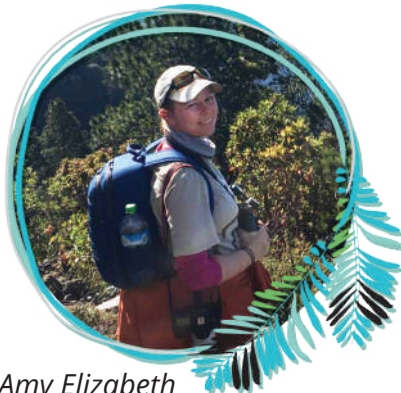
CONFERENCIAS MAGISTRALES
MAGISTERIAL CONFERENCES



*Ernesto
Rúelas Inzunza*



Mark Willuhn



*Amy Elizabeth
Mcandrews*



*Jorge Ernesto
Montejo Díaz*



*René Alonso
Valdés Peña*



René Sada

CONFERENCIAS MAGISTRALES
MAGISTERIAL CONFERENCES



*Jorge
Silva Rivera*



*Sergio
Pedrero Villanueva*



*Cesar
Bollatty Bedregal*



*José Miguel
Pantaleón*



*Mario
Espinosa*



RECORRIDOS DEL FESTIVAL
FESTIVAL TOURS

- **Reserva de la Biosfera El Ocote-Armando Zebadua**
El Ocote Biosphere Reserve – Armando Zebadua

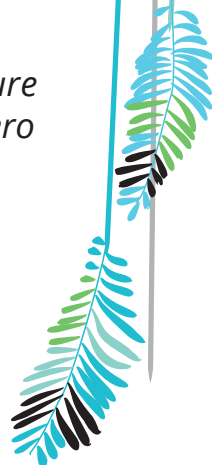
Salida Hotel Sede destino autopista Coatzacoalcos, Carrizal, Armando Zebadua, Laguna Bélgica, Tuxtla Gutiérrez / *Departure from the headquarter hotel doing birding on the Coatzacoalcos freeway, Carrizal, Armando Zebadua, Laguna Bélgica, Tuxtla Gutiérrez.*

- **Ruta Altos de Chiapas- San Cristóbal de Las Casas**
Altos de Chiapas route - San Cristóbal de Las Casas

Salida Hotel Sede destino autopista San Cristóbal de Las Casas, Montetik, Moxviquil, Centro de Conservación e Investigación de los Altos Chiapas (CE-CIBACH), Tuxtla Gutiérrez / *Departure from the headquarter hotel doing birding on the San Cristóbal de Las Casas freeway, previously Montetik, Moxviquil, Conservation and Investigation center of Altos de Chiapas (CECIBACH), and finally Tuxtla Gutiérrez.*

- **Ruta Parque Nacional Cañón del Sumidero**
Cañón del Sumidero National park route

Salida Hotel Sede destino miradores Parque Cañón del Sumidero / *Departure from the headquarter Hotel heading out to the viewpoints in El Cañón del Sumidero park.*





- **Reserva de la Biosfera la Sepultura- Costa**
La Sepultura Biosphere Reserve- Coast

Salida del Hotel Sede, destino carretera libre Arriaga, Puerto Arista, Tuxtla Gutiérrez / *Departure from the headquarter Hotel, doing birding on the Arriaga freeway, previously we would be heading to Puerto Arista, Tuxtla Gutiérrez.*

- **Ruta Zona Zoque- Tapalapa**
Zoque zone route - Tapalapa

Salida del Hotel Sede, destino reserva ecológica Tapalapa, Coapilla, San Fernando Tuxtla Gutiérrez / *Departure from the headquarter Hotel heading out to the ecologic reserve, Tapalapa, Coapilla, San Fernando Tuxtla Gutiérrez.*

